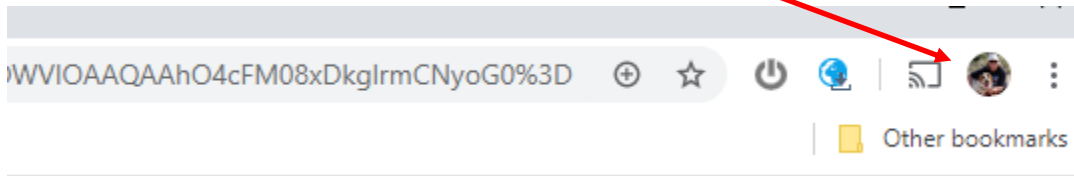
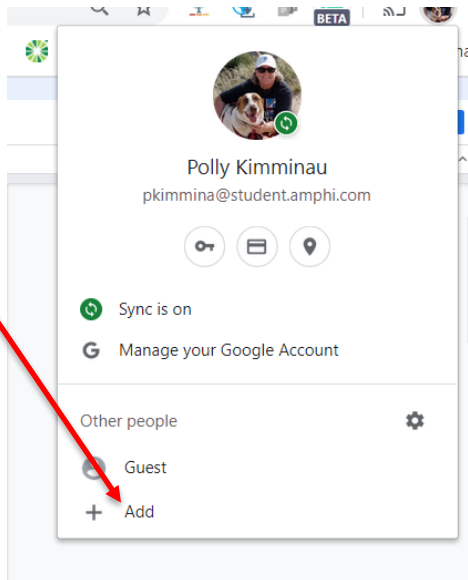


Students...Adding your Google Email in order to access your school's bookmarks and ALEKS:

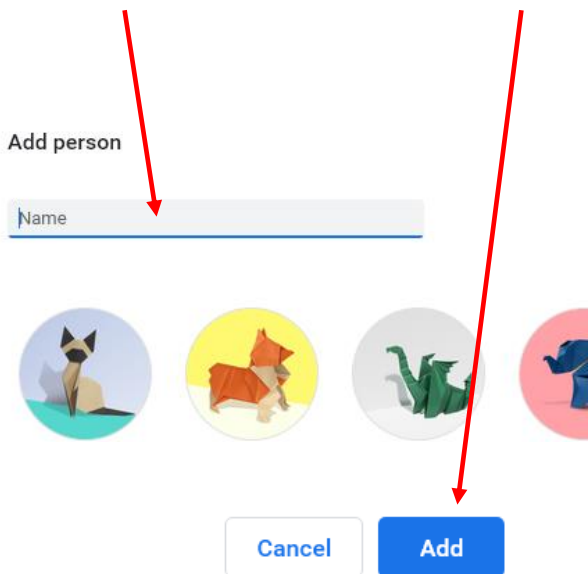
Go into Google Chrome and click on the icon at top right of screen.



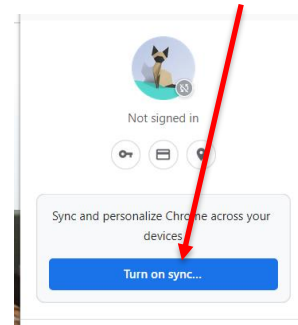
Scroll down and select **Add**



Type in your name and click **ADD** at the bottom right of the screen.



Go up to the new icon at the top right of your screen, click on it and select **Turn on sync...**



Set up your browser in a few simple steps

Make Chrome your own

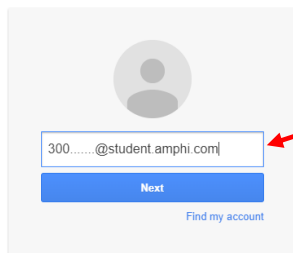
If this screen shows up, select "Already a Chrome user? Sign in"

Get Started

Already a Chrome user? Sign in

One account. All of Google.

Sign in with your Google Account



300.....@student.amphi.com

Next

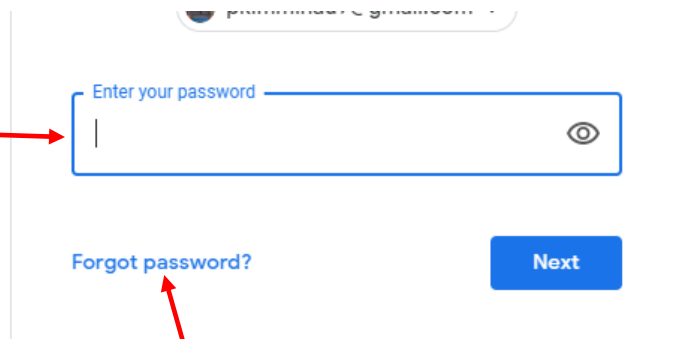
Find my account

Enter your Amphi Email address and click Next:

300.....@student.amphi.com

Put in your password: Student's first name with first letter capitalized and click next.

Note: If you changed your password last year, use that password.



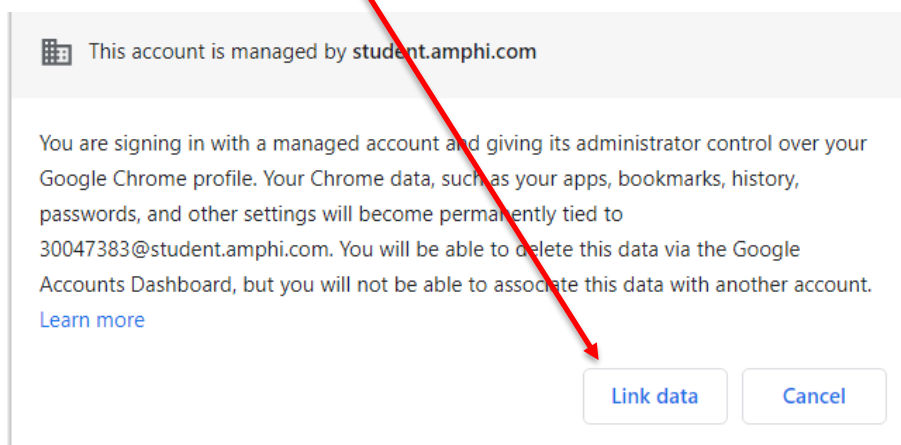
Enter your password

Forgot password?

Next

If you have forgotten your password, follow the instructions here.

At this point, you should see a "Link Data" screen. Clicking on this will connect you to your school's bookmarks.

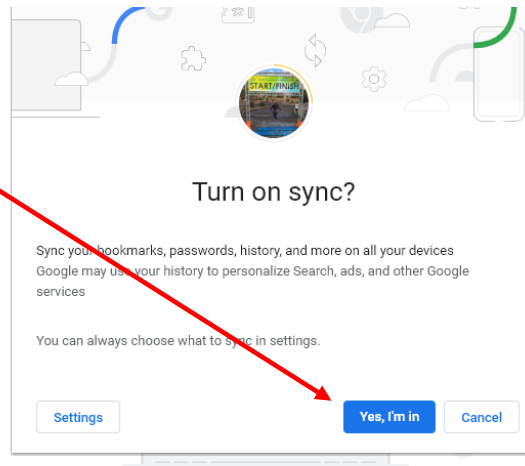


This account is managed by student.amphi.com

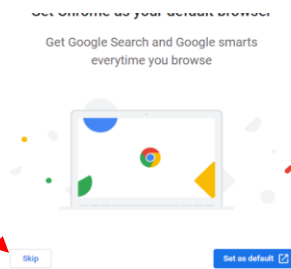
You are signing in with a managed account and giving its administrator control over your Google Chrome profile. Your Chrome data, such as your apps, bookmarks, history, passwords, and other settings will become permanently tied to 30047383@student.amphi.com. You will be able to delete this data via the Google Accounts Dashboard, but you will not be able to associate this data with another account. [Learn more](#)

Link data Cancel

Then click on “Yes,
I’m in”



Select Skip



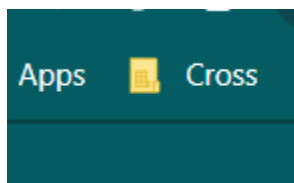
Your school’s bookmarks should be in the upper left on the bookmarks bar.

5

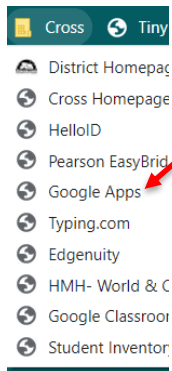
Kangaroo High School

To get to ALEKS:

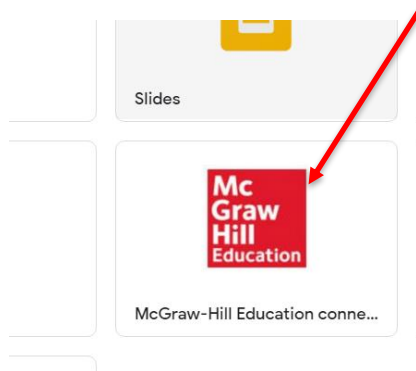
- **Open school’s bookmarks**



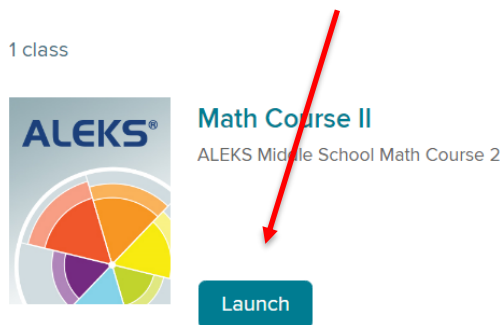
- **Select Google Apps**



Scroll down to McGraw-Hill and select



Click on ALEKS “Launch”



- **Have fun with ALEKS!**